

Monolithic crystal filter

MQF21.4-1200/01



Application

- 2 pol filter
- i.f.- filter
- use in mobile and stationary transceivers

Limiting values

		Unit	Value
Center frequency	f_0	MHz	21.4
Insertion loss		dB	≤ 1.0
Pass band at 3.0 dB		kHz	± 6.00
Ripple in pass band	$f_0 \pm 4.00$ kHz	dB	≤ 1.0
Stop band attenuation	$f_0 \pm 25$ kHz	dB	≥ 20
	$f_0 \pm 200 \dots 1000$ kHz	dB	> 35
Spurious responses	$f_0 + 30 \dots 300$ kHz	dB	> 14

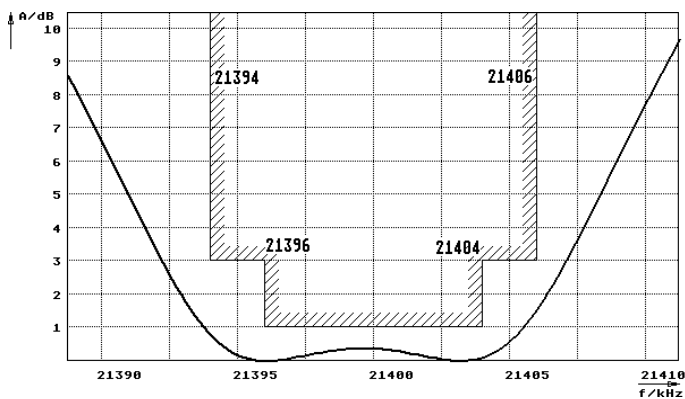
Terminating impedance Z

R1 C1	Ohm/pF	900 0
R2 C2	Ohm/pF	900 0

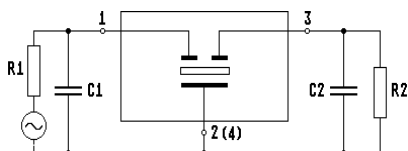
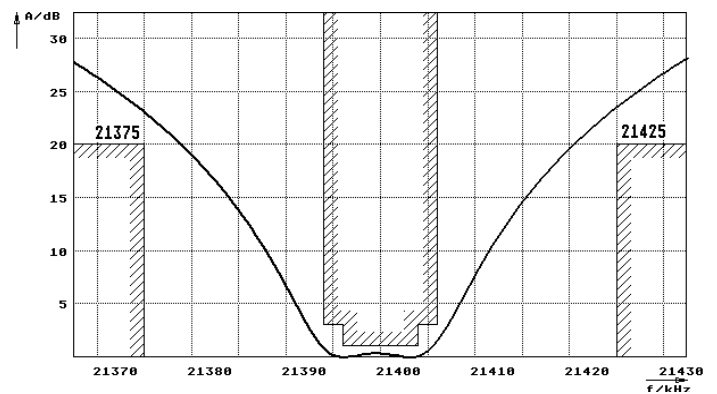
Operating temp. range	$^{\circ}\text{C}$	-25... +70
-----------------------	--------------------	------------

Characteristics MQF21.4-1200/01

Pass band



Stop band



Pin connections: 1 Input
2 Input-E
3 Output
4 Output-E

